

BENEFIT TRENDS

Shaping 2018



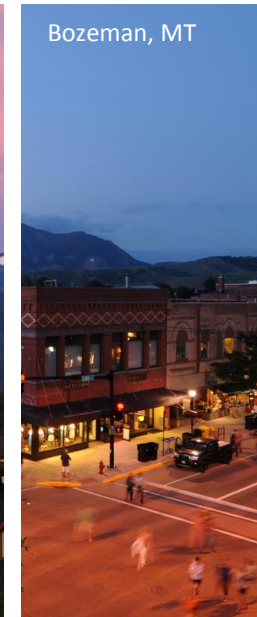
THE
PARTNERS
GROUP

Employee Benefits Team

NW Largest Independent Benefits Team

Leading
Independent
Northwest
Broker

Dedicated
Local
Service



The Partners Group (TPG) is the largest independent benefits broker in the Northwest with more than 145 employees serving clients from five offices in Washington, Oregon and Montana. TPG's culture puts people first. Whether it's our employees or our customers, we always put the interest of our people and those we serve above all else.



A Unique Mix of Employer Services

A highly consultative approach focused on the specific priorities of each employer.



Agenda

- Personalized benefits for a multi-generational workforce
- Rise of portable benefits in a “Gig” economy
- Financial well-being gaining traction
- Greater use of technology to drive consumerism & decision making

Personalized benefits for a multi-generational workforce



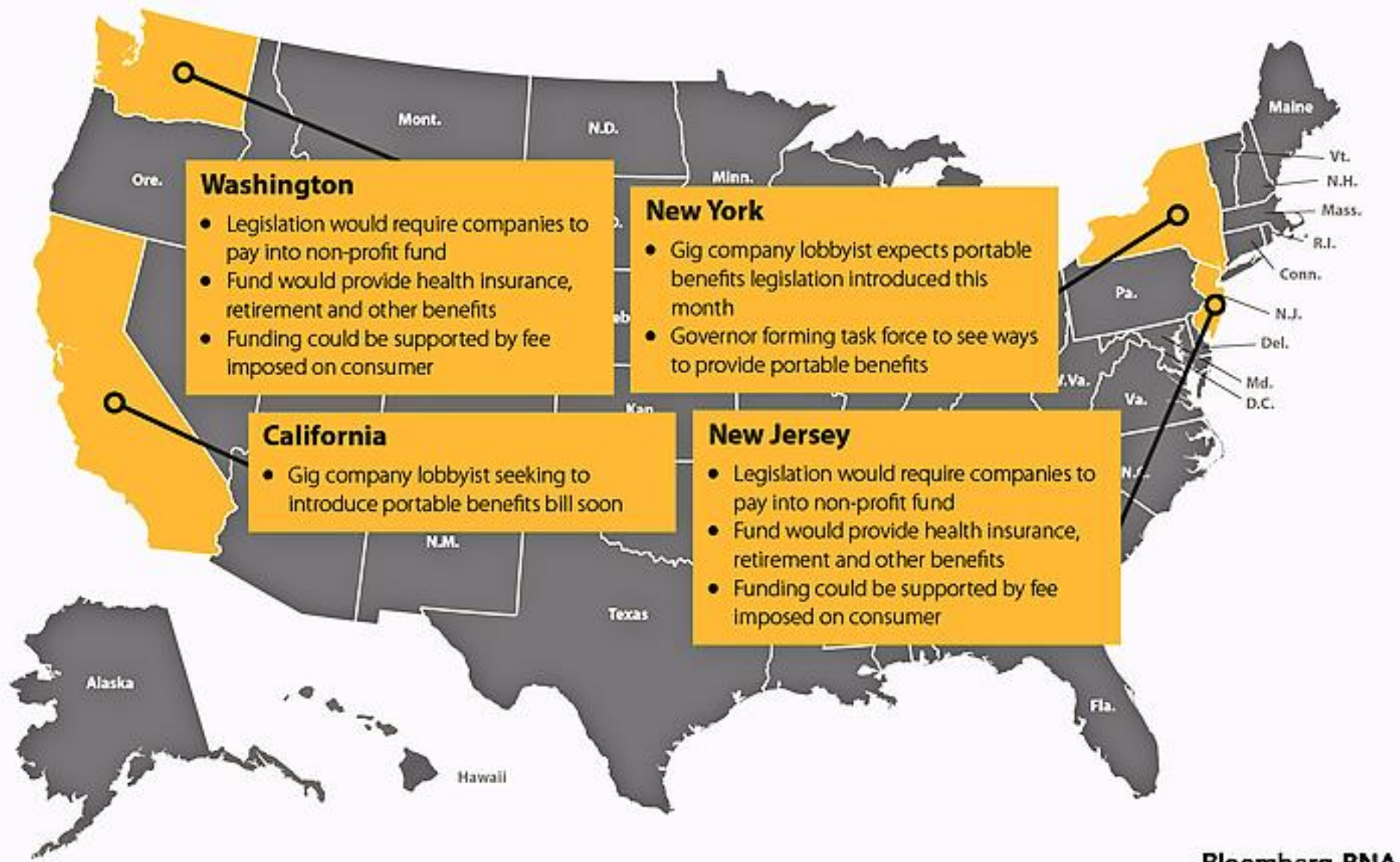
- Looking at what employees need vs. what they have
- Prioritize communications through diverse channels
- Use employee demographics to guide benefit investments
- Flexible benefits strategies to engage entire workforce

Rise of portable benefits in a “Gig” economy



- An estimated 55 million Americans work for themselves
- 34% of the work force / expected to be 43% by 2020
- Employers offering voluntary benefits to attract & retain Gig employees
- Portable Benefits legislation proposed in multiple states

Movement of Portable Benefits




Bloomberg BNA

Financial well-being gaining traction



- Employers in early stages of programs
- Look at workforce to see where programs could help
- Integrate with existing benefit and compensation package
- Include online/digital access to education and tools

Greater use of technology to drive consumerism & decision making

- 
- More employers using technology to automate benefit enrollment
 - Healthcare consumer and cost transparency gaining traction
 - Telemedicine and digital health on the rise

Presented By...



**JUST ONE
OF YOUR TPG
PARTNERS**

Todd Miller
Managing Benefits Consultant
The Partners Group

A man in a grey suit and light blue shirt is holding binoculars to his eyes. The background is a bright blue sky with wispy clouds. The image is framed by a semi-transparent grey rectangle containing text and a logo.

Thank You

Todd Miller

www.tpgrp.com | 800-722-6339

communications@tpgrp.com



THE
**PARTNERS
GROUP**